

## Cherry How Accessibility Statement 2022

In preparing this accessibility statement we aim to describe physical features and equipment that may make access to, or use of, Cherry How either difficult or easy for guests with a range of needs. We have tried to cater for individual requirements where possible within the constraints imposed by the traditional design of the building. All width measurements given are refer to the narrowest point of the doorway, gate etc. This statement was originally produced in June 2022.

### **General**

Cherry How is located 400m (400 yards) from the village of Patterdale. Travelling from the direction of the neighbouring village, Glenridding, after passing the White Lion pub on your left you take the first road on the left, over the bridge. The bridge is 2.67m (8'9") wide at its narrowest point, which is accessible for almost all vehicles, including the refuse collection lorry, though we have sometimes had difficulty with furniture delivery vans. Vehicles that can cross the bridge will have no difficulty with the lane which is a tarmac adopted road. Broad How is the first house on the left, and Cherry How shares a drive with it. The name is clearly visible on a sign at the main gate. There are two gates, the one to the main upper driveway is 3.66m wide (12') and one to the lower drive 2.74m wide (9'). The shared driveway is accessed through the second gate.



There is off-road parking available on a level firm surface, covered with gravel and with enough room for approximately five cars on the main driveway and two or three on the lower drive. As the drive is currently shared with Broad How, we ask visitors there to leave enough space for two cars for people staying at Cherry How.

### **Entrances**



The main entrance to Cherry How is up the stone steps from the lane. There are 3 flights each of 3 steps, leading to the front door. The front door is 86cm wide. There are two steps leading up to it; the one is 12cm high and the upper 18cm.



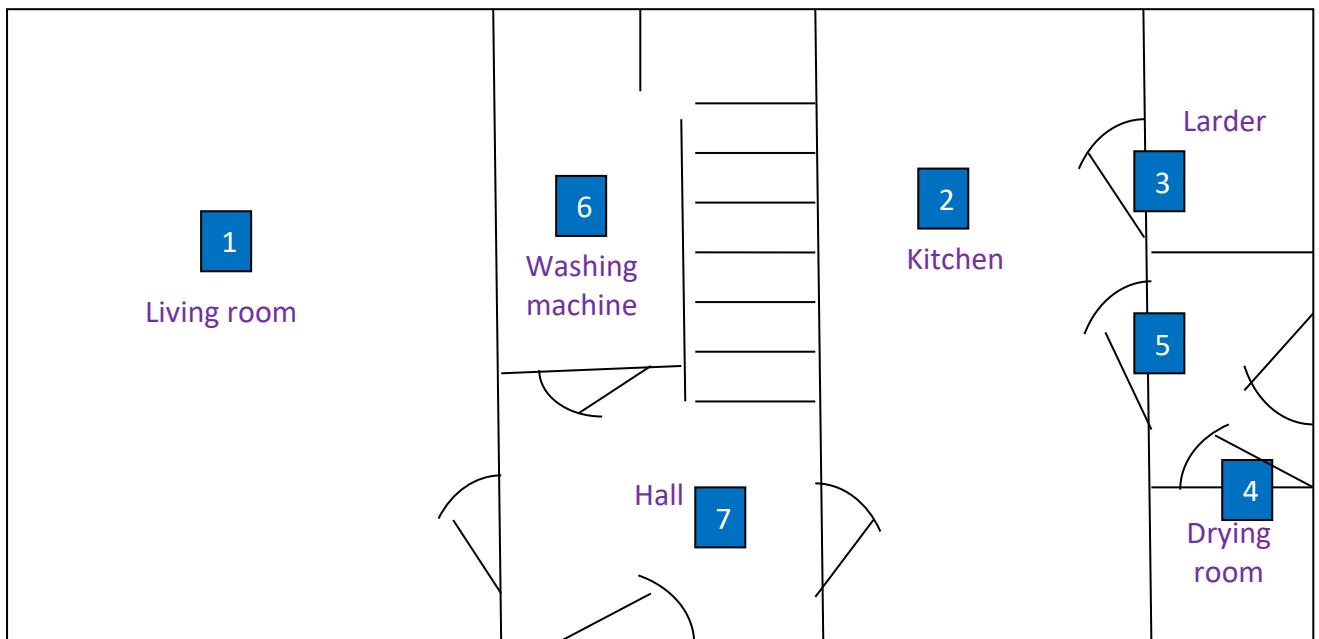


You can also get to Cherry How from the shared driveway with Broad How. This way in is via a gravel path which is 80 cm at its narrowest point, and also leads up to the front door. If you follow the path past the front door the final entrance is the back door leading through a small lobby to the kitchen.



The doorway is narrower – approx. 63cm. There are two steps and a lip. The lower step is 3cm high, the upper is 6cm and the lip is 4cm.

### Ground Floor (not to scale)



1. The living room has comfortable seating for 5 people, and a foot stool. There is a hardwood floor with a large rug in the centre. The width of the door to the living room is 69cm, and the floor in the doorway is slightly uneven.

2. The kitchen floor and the areas off it (larder, lobby and drying room) are tiled with a non-slip surface. The width of the door into the kitchen is 70cm.

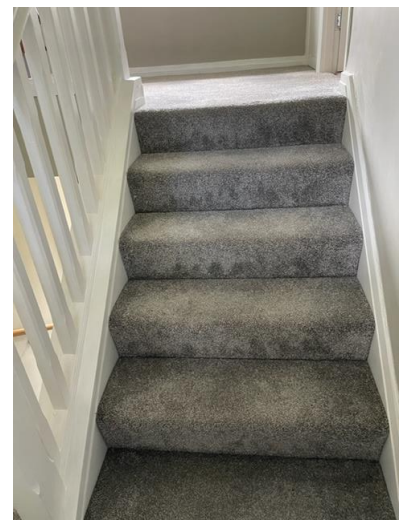


3. The door from the kitchen to the larder is 64cm width and opens inwards into the kitchen.
4. The door into the drying room is 58cm width and opens into the lobby.
5. The door from the kitchen into the lobby is 70 cm width and opens into the kitchen.
6. There is a washing machine in the space under the stairs. The door to it is 66cm and opens into the hallway.

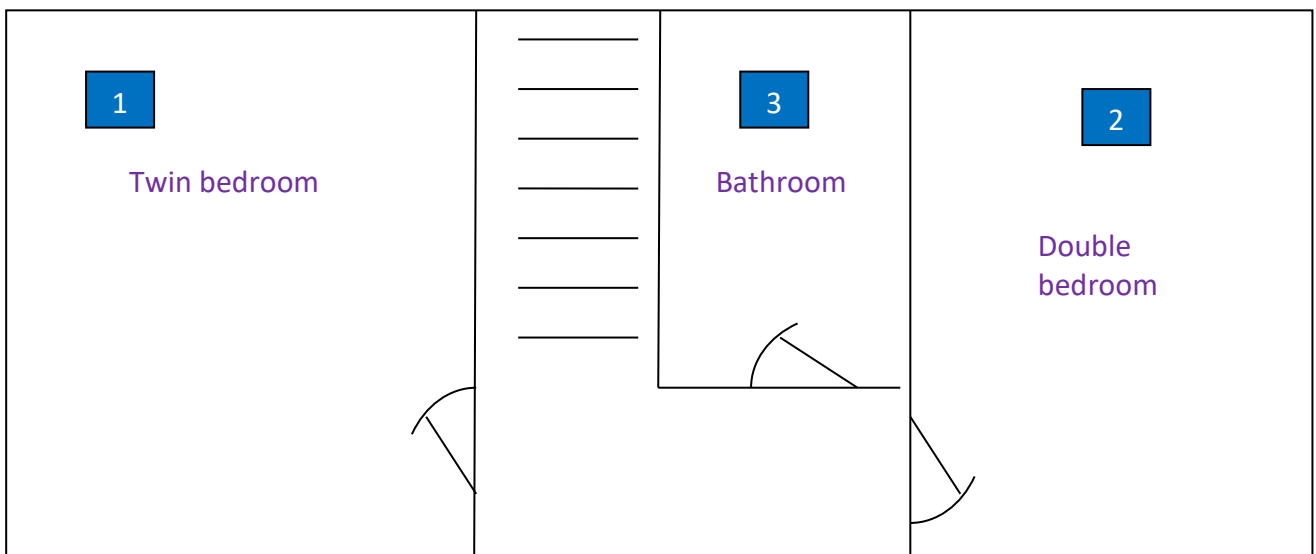
**Stairs** (not to scale)



The stairs are carpeted and not too steep. There are 7 steps in the lower flight of stairs, 1 in the middle flight and 6 in the upper. There is a solid wooden hand rail to the right on the lower and middle flights, and a banister rail to the left on the upper flight.



**Upper floor** (not to scale)



1. If you turn right at the top of the stairs you get to the twin bedroom. The door opens inwards into the room and is 70 cm wide. The floor is carpeted.
2. At the other end of the corridor is the double bedroom. The door opens inwards into the room and is 70 cm wide. The floor is carpeted.
3. The door to the bathroom is 70 cm wide and opens into the room. The floor is tiled. There is bath with a shower over it. There is a handle, for balance, at the shower end of the bath.

### ***Other***

A few other details that might be useful:

- Non-feather pillows and duvets on all beds
- Assistance dogs welcome
- Emergency phone numbers for local doctors, dentists and hospitals are included in the information folder.
- We would be happy to provide the information file in large print if requested in advance

If you have any suggestions of ways in which we could make Cherry How more accessible for you or others please let us know. We would also welcome suggestions of additional information that could usefully be included in this statement.

June 2022